

Name:

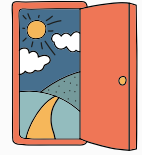
Date:

Section:

Score:



10-Sentence Story Challenge: The Door That Wasn't There Yesterday



Instructions: Write a 10-sentence short story using the structure below. Each sentence has a specific focus to help you build suspense and develop your writing craft. Your story begins with a mysterious door that suddenly appears.

Sentence 1:

Start with: "This morning, [character's name] noticed a door where there wasn't one before."

Sentence 2:

Describe the door's appearance using a **simile** (e.g., "It was tall and dark like a shadow stuck to the wall.")



Sentence 3:

Show your character's reaction using a **vivid emotion** (e.g., awe, fear, excitement).

Sentence 4:

Include an **internal thought**. (e.g., Should I open it?)

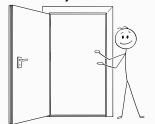


Sentence 5:

Describe the setting around the door using **sensory details** (What does the air feel like? What do you hear?)

Sentence 6:

Have the character touch or interact with the door using a **strong verb** (e.g., yanked, pressed, nudged).



Sentence 7:

Use **personification** to describe what happens next (e.g., "The door groaned as if it had just woken up from a long nap.")

Sentence 8:

Introduce **something unexpected** on the other side (it could be magical, creepy, futuristic, etc.).

Sentence 9:

Use a sentence with "**even though**" (e.g., "Even though her heart raced, she stepped through.")

Sentence 10:

End with a **twist or surprise**. (e.g., "The door slammed shut behind him—and disappeared.")



Lined paper template with horizontal ruling lines.